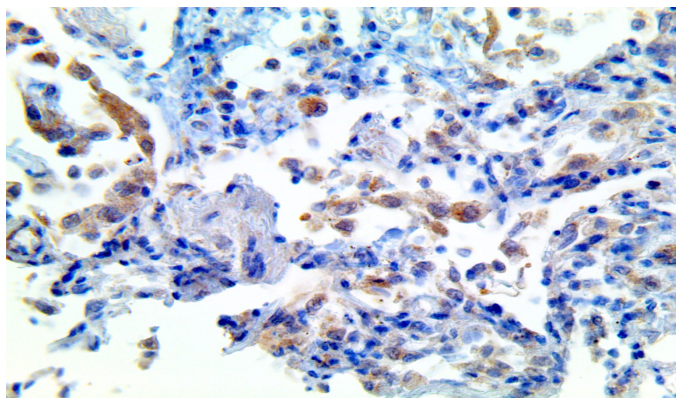


IL-1b

Clone: BSB-139
Mouse Monoclonal

IVD



Inset: IHC of IL-1b on a FFPE SARS-CoV-2 Infected Lung Tissue

Intended Use

For In Vitro Diagnostic Use.

This antibody is intended for use in Immunohistochemical applications on formalin-fixed paraffin-embedded tissues (FFPE), frozen tissue sections and cell preparations. Interpretation of results should be performed by a qualified medical professional.

Immunogen

Recombinant protein corresponding to the IL-1 β of human origin.

Summary and Explanation

IL-1b has multiple functions as a major pro-inflammatory cytokine regulated by NF κ B. The 31 kDa precursor is biologically inactive in the cytosol, and is processed to its active 17 kDa mature form by Caspase 1 in special lysosomes. The beta-barrel cytokine is secreted to participate in pathways of angiogenesis, antigen presentation, adhesion molecule expression, inflammatory cell activity, and expression of matrix degrading enzymes.

IL-1b is produced by tumor-infiltrating myeloid cells, which then produce VEGF and other angiogenesis-related factors, promoting growth in multiple tumor types. IL-1b has a role in tumor metastasis and helps maintain an inflammatory tumor environment, but has also demonstrated an anti-tumorigenic function in recruiting immune cells and driving activation of the Th1 response against B cell myeloma and lymphoma. Pathogen-Associated Molecular Patterns can also initiate expression of IL-1b, helping to accumulate neutrophils and promote inflammation and fibrosis at the infection site.

| | | | |
|---------------------------|------------------|-------------------|---|
| Antibody Type | Mouse Monoclonal | Clone | BSB-139 |
| Isotype | IgG2b | Reactivity | Paraffin, Frozen |
| Localization | Cytoplasmic | Control | Colon, Pancreas, Liver, Stomach, Brain, Testis, Lung, Transitional Cell Carcinoma, Tonsil |
| Species Reactivity | | Human | |

Presentation

Anti-IL-1b is a mouse monoclonal antibody derived from cell culture supernatant that is concentrated, dialyzed, filter sterilized and diluted in buffer pH 7.5, containing BSA and sodium azide as a preservative.

| Catalog No. | Antibody Type | Dilution | Volume/Qty |
|--------------------|----------------------|-----------------|-------------------|
| BSB-3706-3 | Tinto Predilute | Ready-to-Use | 3.0 mL |
| BSB-3706-7 | Tinto Predilute | Ready-to-Use | 7.0 mL |
| BSB-3706-15 | Tinto Predilute | Ready-to-Use | 15.0 mL |
| BSB-3706-01 | Concentrate | 1:50 - 1:200 | 0.1 mL |
| BSB-3706-05 | Concentrate | 1:50 - 1:200 | 0.5 mL |
| BSB-3706-1 | Concentrate | 1:50 - 1:200 | 1.0 mL |

Control Slides Available

| Catalog No. | Quantity |
|--------------------|-----------------|
| BSB-3706-CS | 5 slides |

Storage Store at 2-8°C (Control Slides: Store at 20-25°C)

Precautions

1. For professional users only. Results should be interpreted by a qualified medical professional.
2. This product contains <0.1% sodium azide (NaN₃) as a preservative. Ensure proper handling procedures are used with this reagent.
3. Always wear personal protective equipment such as laboratory coat, goggles and gloves when handling reagents.
4. Dispose of unused solution with copious amount of water.
5. Do not ingest reagent. If reagent is ingested, seek medical advice immediately.
6. Avoid contact with eyes. If contact occurs, flush with large quantities of water.
7. Follow safety precautions of the heating device used for epitope retrieval (TintoRetriever Pressure Cooker or similar).
8. For additional safety information refer to Safety Data Sheet for this product.
9. For complete recommendations for handling biological specimens, please refer to the CDC document, "Guidelines for Safe Work Practices in Human and Animal Medical Diagnostic Laboratories" (see References in this document).

Stability

This product is stable up to the expiration date on the product label.

Do not use after expiration date listed on package label. Temperature fluctuations should be avoided. Store appropriately when not in use, and avoid prolonged exposure to room temperature conditions.

Specimen Preparation

Paraffin sections: The antibody can be used on formalin-fixed paraffin-embedded (FFPE) tissue sections. Ensure tissue undergoes appropriate fixation for best results. Pre-treatment of tissues with heat-induced epitope retrieval (HIER) is recommended using Bio SB ImmunoDNA Retriever with Citrate (BSB 0020-BSB 0023), ImmunoDNA Retriever with EDTA (BSB 0030-BSB 0033) or ImmunoDNA Digester (BSB 0108-0112). See reverse side for complete protocol. Tissue should remain hydrated via use of Bio SB Immuno/DNA Washer solutions (BSB 0029 & BSB 0042).

Frozen sections and cell preparations: The antibody can be used on acetone-fixed frozen sections and acetone-fixed cell preparations.

IHC Protocol

1. Cut and mount 3-5 micron formalin-fixed paraffin-embedded tissues on positively charged slides such as Bio SB Hydrophilic Plus Slides (BSB 7028).
2. Air dry for 2 hours at 58° C.
3. Deparaffinize, dehydrate and rehydrate tissues.
4. Subject tissues to heat induced epitope retrieval (HIER) using a suitable retrieval solution such as ImmunoDNA Retriever with Citrate (BSB 0020-BSB 0023) or EDTA (BSB 0030-BSB 0033).
5. Any of three heating methods may be used:

a. TintoRetriever Pressure Cooker or Equivalent

Place tissues/slides in a staining dish or coplin jar containing the ImmunoDNA Retriever with Citrate or EDTA, and place on trivet in the pressure cooker. Add 1-2 inches of distilled water to the pressure cooker and turn heat to high. Incubate for 15 minutes. Open and immediately transfer slides to room temperature.

b. TintoRetriever PT Module or Water Bath Method

Place tissues/slides in a pre-warmed staining dish or coplin jar containing the ImmunoDNA Retriever with Citrate or EDTA at 95°-99° C. Incubate for 30-60 minutes.

c. Conventional Steamer Method

Place tissues/slides in a pre-warmed staining dish or coplin jar containing the ImmunoDNA Retriever with Citrate or EDTA in a steamer, cover and steam for 30-60 minutes.

6. After heat treatment, transfer slides in ImmunoDNA Retriever with Citrate or EDTA to room temperature and let stand for 15-20 minutes.
7. For manual IHC, perform antibody incubation at ambient temperature. For automated IHC methods, perform antibody incubation according to instrument manufacturer's instructions.
8. Wash slides with ImmunoDNA washer or DI water.
9. Continue IHC protocol. Wash slides between each step with ImmunoDNA washer solution.

Abbreviated Immunohistochemical Protocol

| Step | ImmunoDetector AP/HRP | PolyDetector AP/HRP | PolyDetector Plus HRP |
|--------------------------|-----------------------|---------------------|-----------------------|
| Peroxidase/AP Blocker | 5 min. | 5 min. | 5 min |
| Primary Antibody | 30-60 min. | 30-60 min. | 30-60 min. |
| 1st Step Detection | 10 min. | 30-45 min. | 15 min. |
| 2nd Step Detection | 10 min. | Not Applicable | 15 min. |
| Substrate- Chromogen | 5-10 min. | 5-10 min. | 5-10 min. |
| Counterstain / Coverslip | Varies | Varies | Varies |

Mounting Protocols

For detailed instructions using biodegradable permanent mounting media such as XyGreen PermaMounter (BSB 0169-0174) or organic solvent based resin such as PermaMounter (BSB 0094-0097), refer to PI0174 or PI0097.








Product Limitations

Due to inherent variability present in immunohistochemical procedures (including fixation time of tissues, dilution factor of antibody, retrieval method utilized and incubation time), optimal performance should be established through the use of positive and negative controls. Results should be interpreted by a qualified medical professional.

References

1. Baker, Kevin J, et al. IL-1 Family Members in Cancer; Two Sides to Every Story. Front Immunol. 2019 Jun 7; 10:1197. <https://www.ncbi.nlm.nih.gov/pmc/articles/PMC6567883/>
2. Rabolli, Virginie, et al. The alarmin IL-1 α is a master cytokine in acute lung inflammation induced by silica micro- and nanoparticles. Part Fibre Toxicol. 2014 Dec 13; 11:69. <https://www.ncbi.nlm.nih.gov/pmc/articles/PMC4279463/>
3. Dinarello, Charles A. Overview of the IL-1 family in innate inflammation and acquired immunity. Immunol Rev. 2018 Jan; 281(1):8-27. <https://www.ncbi.nlm.nih.gov/pmc/articles/PMC5756628/>
4. Moldoveanu B, et al. Inflammatory mechanisms in the lung. J Inflamm Res. 2009; 2: 1-11. <https://www.ncbi.nlm.nih.gov/pmc/articles/PMC3218724/>
5. Krumm, Brian, et al. Structural biology of the IL-1 superfamily: Key cytokines in the regulation of immune and inflammatory responses. Protein Sci. 2014 May; 23(5): 526-538. <https://www.ncbi.nlm.nih.gov/pmc/articles/PMC4005705/>
6. Moore, SA, et al. Expression and regulation of human alveolar macrophage-derived interleukin-1 receptor antagonist. Am J Respir Cell Mol Biol. 1992 Jun; 6(6):569-75. <https://pubmed.ncbi.nlm.nih.gov/1534243/>
7. Russell, Beth, et al. Associations between immune-suppressive and stimulating drugs and novel COVID-19—a systematic review of current evidence. Ecancermedalscience. 2020 Mar 27; 14:1022. <https://www.ncbi.nlm.nih.gov/pmc/articles/PMC7105343/>
8. U.S. Department of Health and Human Services: Centers for Disease Control and Prevention. Guidelines for Safe Work Practices in Human and Animal Medical Diagnostic Laboratories. Supplement / Vol. 61, January 6, 2012.

Symbol Key / Légende des symboles/Erläuterung der Symbole

| | | | |
|--|---|---|---|
| |  Storage Temperature Limites de température Zulässiger Temperaturbereich |  Manufacturer Fabricant Hersteller |  Catalog Number Référence du catalogue Bestellnummer |
|  In Vitro Diagnostic Medical Device Dispositif médical de diagnostic in vitro In-Vitro-Diagnostikum |  Read Instructions for Use Consulter les instructions d'utilisation Gebrauchsanweisung beachten |  Expiration Date Utiliser jusqu'à Verwendbar bis |  Lot Number Code du lot Chargenbezeichnung |